

Bollettino : 04/03/2011

Oggetto : Configurazione di un centralino Epygi con Microsoft Exchange 2007

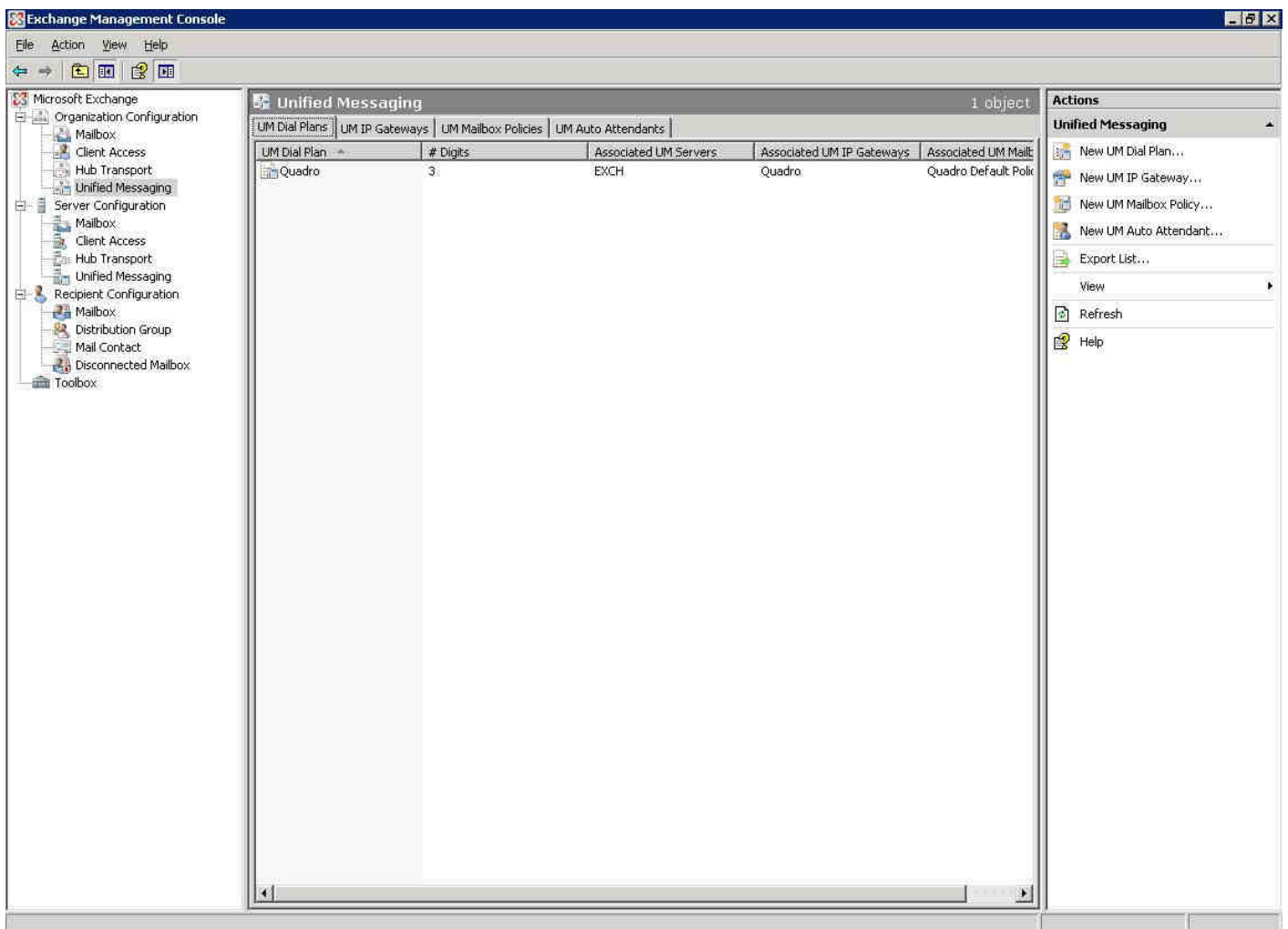
Basic Setup for Quadro IP PBX / Exchange Server 2007 UM

This document describes a simple setup for Microsoft Exchange 2007 UM and Quadro IP PBX . Though this setup provides the basic functionality to get you started.

Configuring Exchange and Quadro IP PBX

1. Install the Unified Messaging role on your exchange server.

Run the Exchange Management Console:



2. Create a New Unified Messaging Dial Plan: Using the Exchange management console, select Organization Configuration/Unified Messaging. Under 'Actions' select the 'New UM Dial Plan'. Name the dial plan 'Quadro' and set the 'Number of digits in extension numbers' to 3 (depending on your dial plan).

New UM Dial Plan

New UM Dial Plan
 Completion

New UM Dial Plan
This wizard helps you create a UM dial plan for use by Microsoft Exchange Unified Messaging. A dial plan is a grouping of unique telephone extension numbers.

Name:
Quadro

Number of digits in extension numbers:
3

URI type:
Telephone Extension

VoIP security:
Unsecured

After you create a new dial plan, the dial plan must be added to one or more UM servers before it will be used.

Help < Back New Cancel

Click 'New' and then 'Finish'.

3. Create a New Unified Messaging IP Gateway: Under 'Actions' select New UM IP Gateway. Name the gateway 'Quadro', select IP address and enter the IP address of your Quadro IP PBX (in our case it is 192.168.2.128). Click the 'Browse' button next to 'Dial Plan' and select the 'Quadro' dial plan you created in step two.

New UM IP Gateway

New UM IP Gateway
 Completion

New UM IP Gateway
This wizard helps you create a UM IP gateway for use by Microsoft Exchange Unified Messaging. UM IP gateways represent the connection between a physical gateway or IP PBX and Unified Messaging.

Name:
Quadro

IP Address:
192.168.2.128
Example: 192.168.10.10

Fully qualified domain name (FQDN):

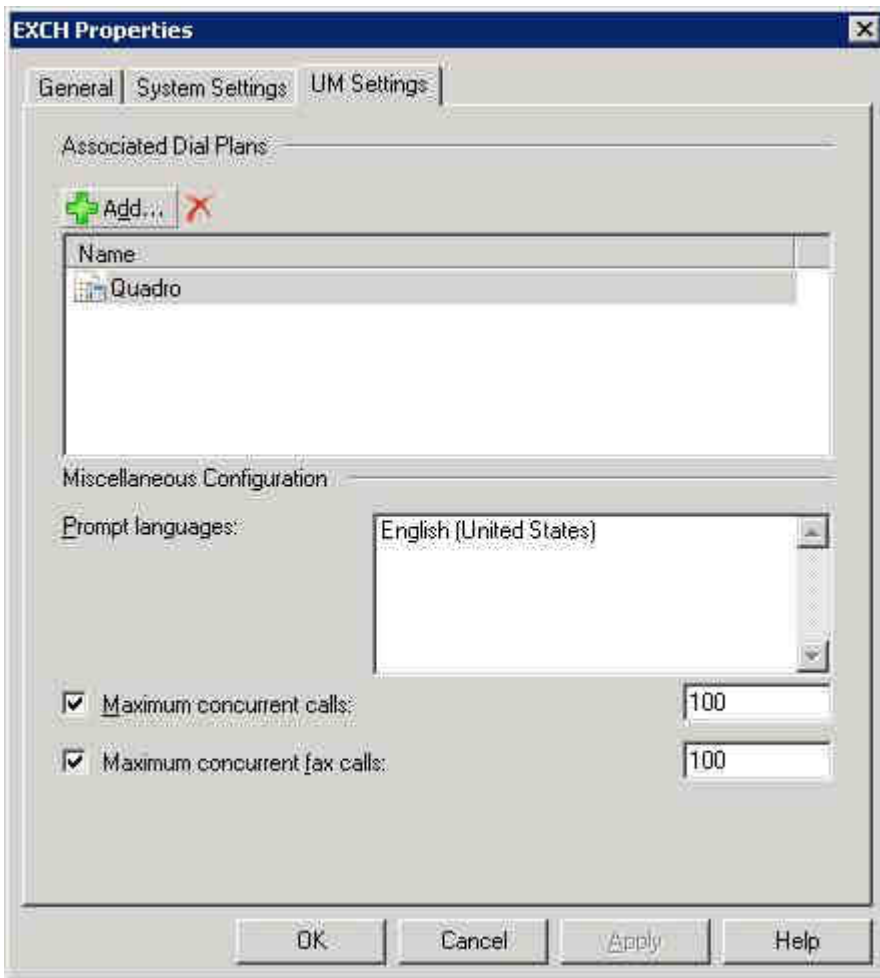
Example: smarthost.company.com

Dial plan:
Quadro

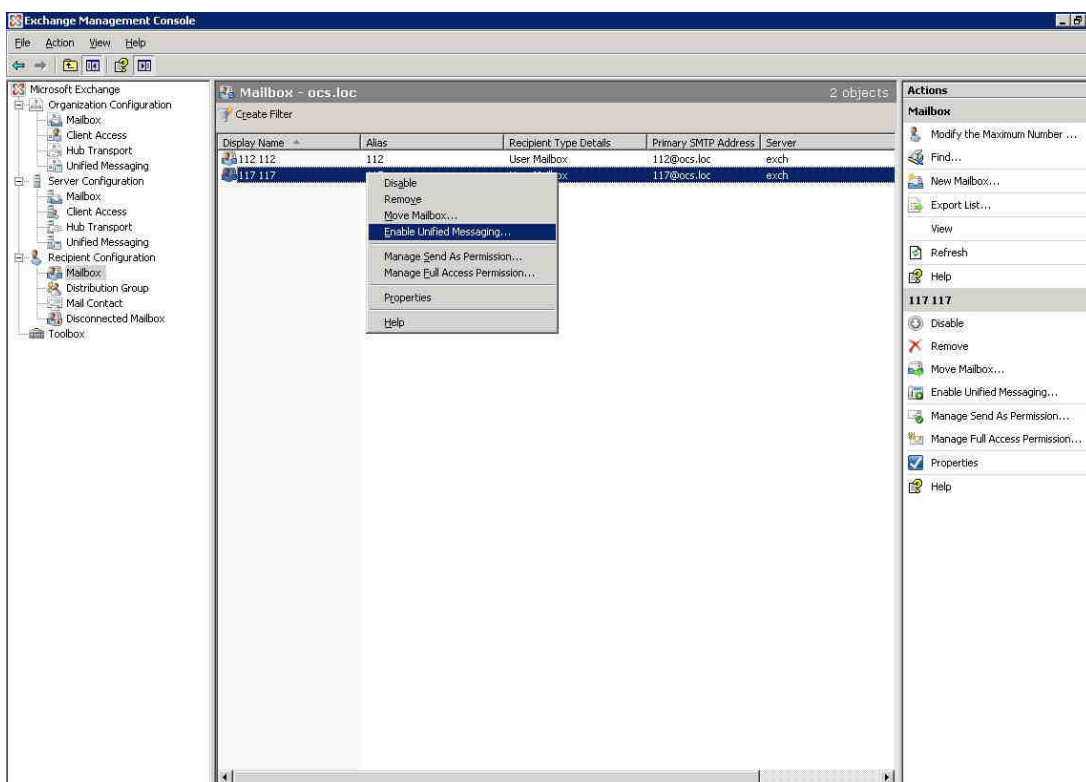
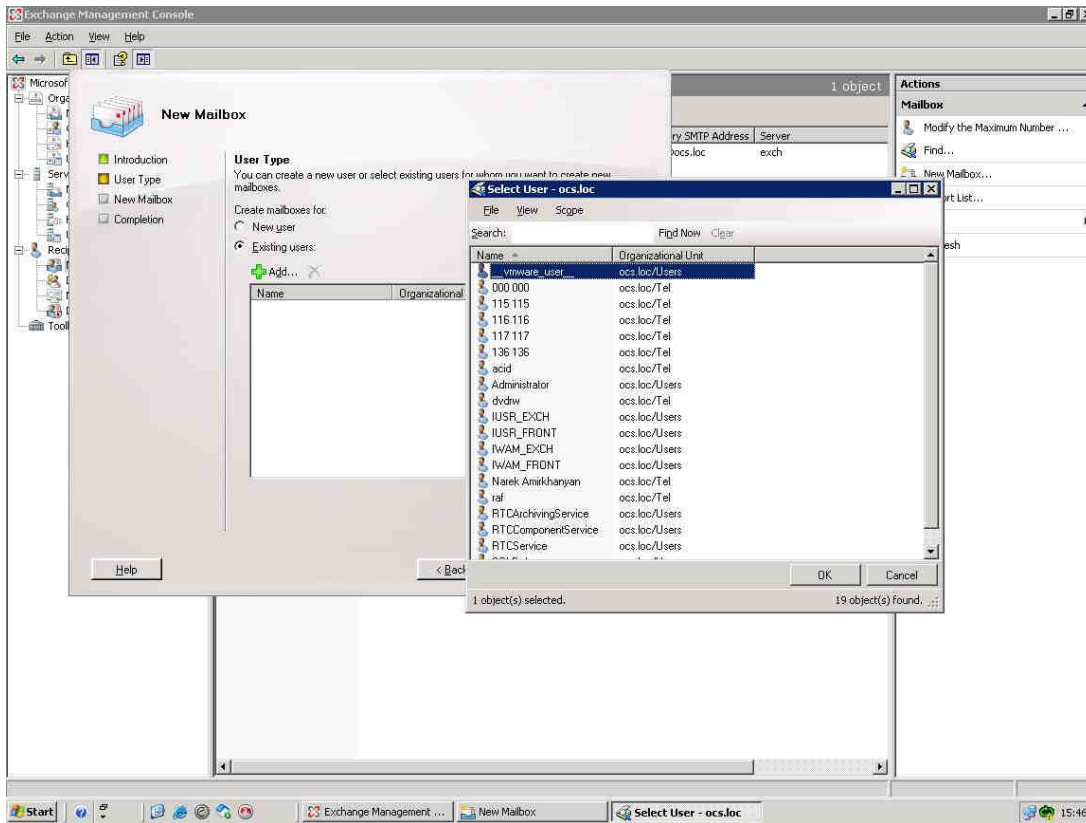
i If a dial plan is selected, a default hunt group will be created to associate this new UM IP gateway to the specified dial plan. If no dial plan is selected, a hunt group must be created manually.

Click 'New' and then 'Finish'.

4. Associate the Dial Plan with the Unified Messaging server: Using the Exchange management console, select Server Configuration/Unified Messaging. Under 'Actions' click on 'Properties' and select the 'UM Settings' tab. Under 'Associated Dial Plans' click the 'Add' button. Choose the 'Quadro' dial plan created in step two. Click OK.



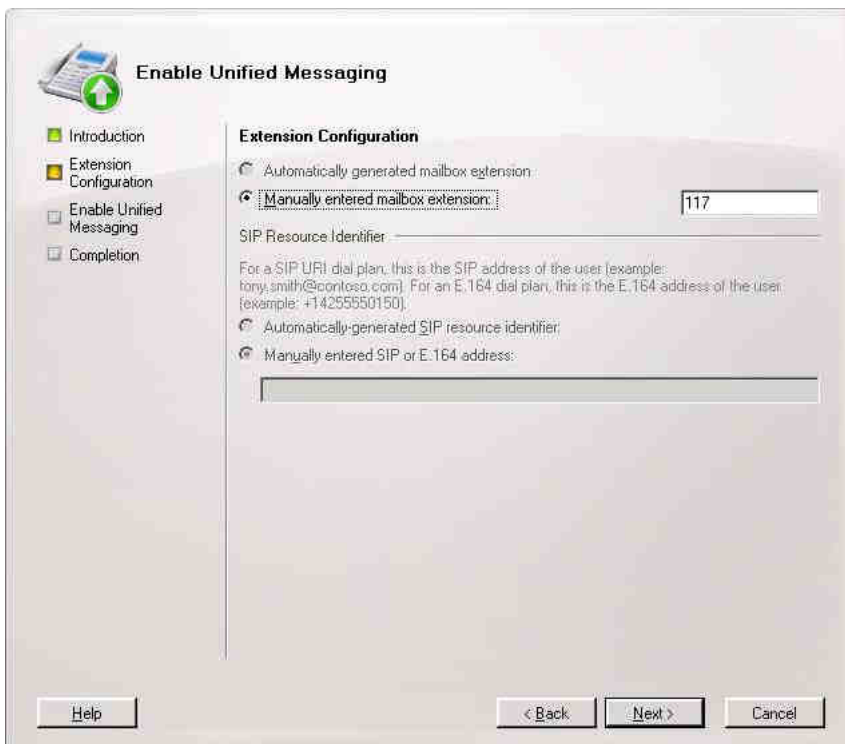
5.Enable Mailbox Recipients for Unified Messaging: Using the Exchange management console, select Recipient Configuration/Mailbox. Select the mailbox you wish to enable and then under 'Actions' click on 'Enable Unified Messaging'.



Next on 'Unified Messaging Mailbox Policy' click the 'Browse' button and select the 'Quadro Default Policy'. Next manually specify the PIN.



Click 'Next' and enter a mailbox extension for the user .



Click on 'Enable' button and you'll get the enabled user for the Unified Messaging. Repeat this step for each mailbox.



Configuring the Quadro IP PBX for Exchange

To configure Quadro IP PBX you need to create the Call Routing Record first.

To create the Call Routing Record navigate the GUI of the Quadro (http://IP_address_of_Quadro)

Under the **"Telephony-> Call Routing-> Call Routing Table"** add the new Call Routing Record.

Click on 'Add' and fill the 'Pattern'. In our example it is 65* which means that if you want to call, for example, extension # 112, you have to dial 65112, and the number of discarded symbols will be 2.

q1 - Call Routing Wizard - Mozilla Firefox

File Edit View History Bookmarks Tools Help

http://192.168.35.70/crwizard.cgi

Quadro 192.168.35.70 Quadro E1/T1 192.1...

Main System Users **Telephony** Internet Uplink Network

epygi

Call Routing Wizard

Routing Call Type - Edit Entry

Pattern: (wildcard supported)

Number of Discarded Symbols:

Prefix:

Suffix:

Call Type:

Metric:

Description:

Filter on Caller / Call Type / Modify Caller ID

Set Date/Time Period(s)

Enabler Key:

Disabler Key:

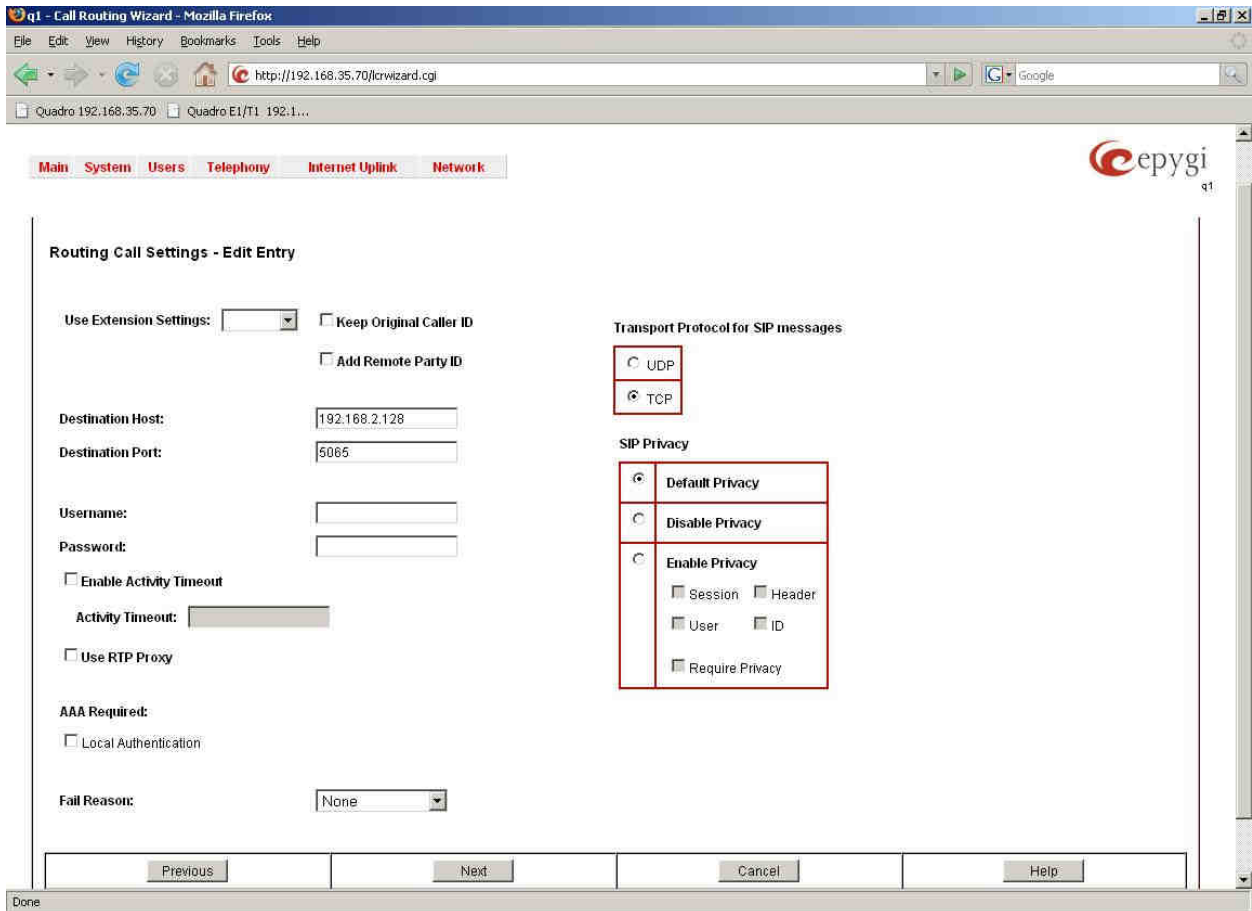
Require Authorization for Enabling/Disabling

Please check your pending events!

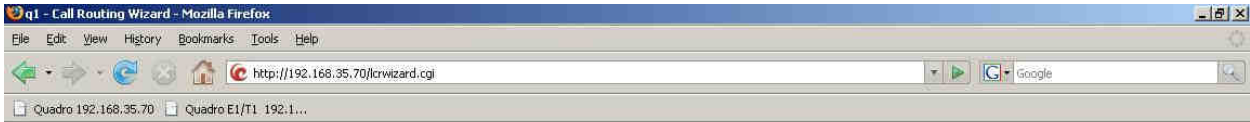
Copyright (C) 2008 Epygi Technologies, Ltd. All rights reserved.

Done

Set the 'Destination Host' to the IP address of the Exchange Server and the 'Destination Port' to the SIP port of Exchange 2007. Set the 'Transport Protocol for SIP messages' to TCP.



Click 'Next' and 'Finish'.



Call Routing Wizard

Routing Call Type		Routing Call Settings	
Pattern:	85*	Use Extension Settings:	
Number of Discarded Symbols:	2	Keep Original Caller ID:	No
Prefix:		Add Remote Party ID:	No
Suffix:		Destination Host:	192.168.2.128
Call Type:	SIP	Destination Port:	5065
Metric:	10	Username:	
Description:		Transport Protocol for SIP:	TCP
		SIP Privacy:	Default
		Use RTP Proxy:	No
		Activity Timeout:	Disabled
		AAA Required:	AAA disabled
		Fail Reason:	None

Previous Finish Cancel Help

Please check your pending events!

Copyright (C) 2008 Epygi Technologies, Ltd. All rights reserved.

Done

The configuration of Call Routing Rules is completed now so that dialing 65 plus the extension of Exchange server (113 for example) you'll get the prompt of the Exchange server.